






# BC-602 Firmware(FW) Update Manual

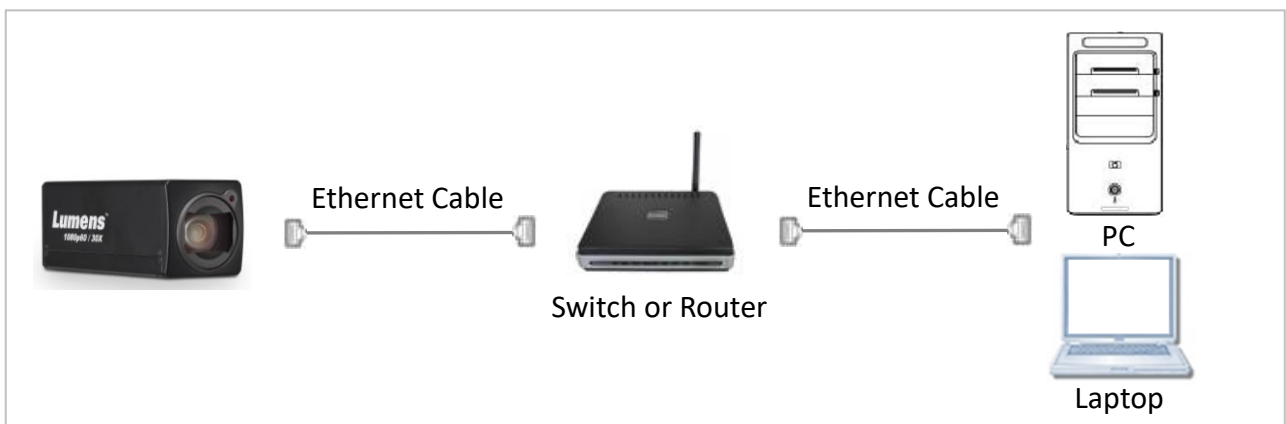
## 1 Device and Tool Preparation

1.1 Please prepare following devices and tools before FW upgrade.

BC-602	PC or Laptop
	 or 
Power adapter and power cord	Ethernet cable
	

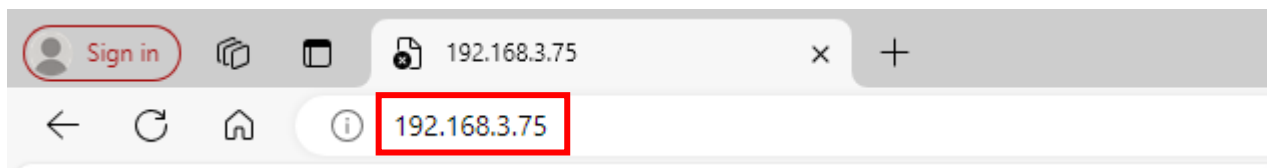
## 2 Connections

2.1 Connecting via switch or router.



### 3 FW Download

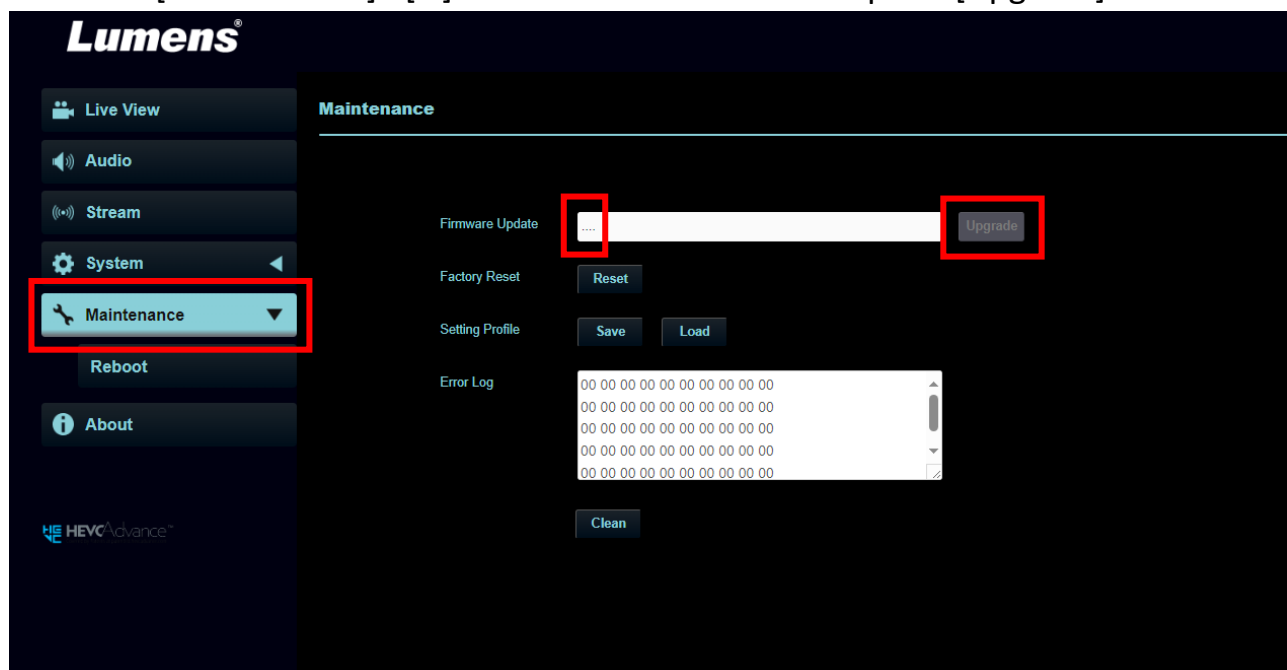
- 3.1 Open browser and enter the IP address of the camera in the address bar.  
You can check the IP address from [Status]> [Ethernet] in the menu.



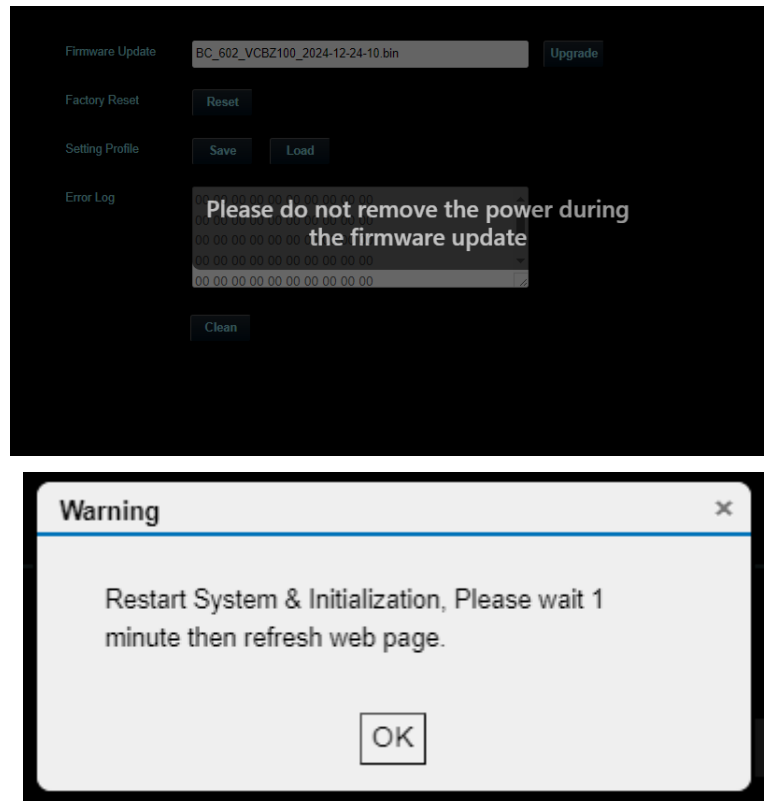
- 3.2 Enter the account and password to log in webpage.  
Account: admin  
Password: 9999(Default)

A screenshot of a 'Sign in to access this site' dialog box. The dialog box has a title 'Sign in to access this site' and a subtitle 'Authorization required by http://192.168.3.75 Your connection to this site is not secure'. It contains two input fields: 'Username' and 'Password'. Below the input fields are two buttons: 'Sign in' and 'Cancel'.

- 3.3 Select [Maintenance]> [...] to select firmware file and press [Upgrade].



### 3.4 FW download starts, please don't close the page. (Around 2-3 minutes taken)



### 3.5 Login webpage again and check the FW version from [About]> [Firmware Version].

